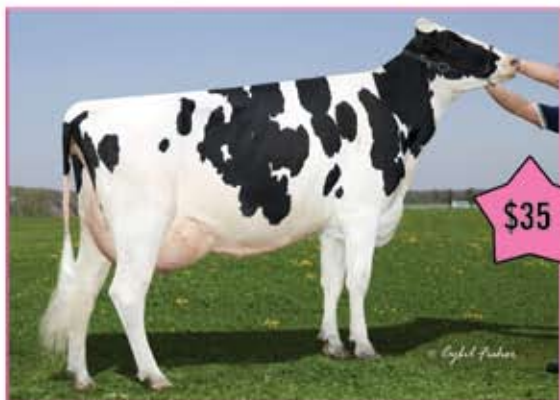


Create The Next Generation

With gender **SELECTed** Semen From Elite Super Samplers™ gender SELECTed



\$35

Gold-N-Oaks Sweet Deal-ET (VG-87)

7H010148 Gold-N-Oaks Ramos FLAX-ET ♂

+1,038M +553NM\$ 2.48SCS +5.0PL +1.3SCR +1.87T +2029GTPI™

- ◆ Elite Ramos son for NM\$ and GTPI
- ◆ The right "type" of linear - improves udders and feet and legs
- ◆ Time-tested sire stack - Ramos x Shottle x Throne x Juror Ford x Duster

Sire: Ramos (GM)

Dam: Gold-N-Oaks Sweet Deal-ET (VG-87)

2-3 365d 38,540M 5.1% 1,960F 3.1% 1,193P

MGS: Picston Shottle-ET (GM)

MGD: Gold-N-Oaks T Goodgirl-ET (VG-88-EX-MS-DOM)

3-8 365d 33,810M 4.7% 1,599F 3.1% 1,065P



\$35

Cook-Farm Champ Fair (EX-92-EX-MS)

7H010184 Cook-Farm Bolton FYI ♂

+1,606M +488NM\$ +5.1PL +2.43T +2.43UDC +2046GTPI™

- ◆ High genomics from eight generations of EX dams
- ◆ Unique - no Shottle, Goldwyn or O MAN here
- ◆ Great combination of milk, productive life and type

Sire: Sandy-Valley Bolton-ET (EX-90)

Dam: Cook-Farm Champ Fair (EX-92-EX-MS)

3-6 365d 35,400M 4.3% 1,513F 3.4% 1,203P

MGS: Calbrett-I H H Champion-ET (EX-CAN-GM)

MGD: Cook-Farm Smmara Fergie-ET (EX-91-2E-EX-MS)

6-8 365d 37,210M 4.1% 1,513F 2.9% 1,084P



\$35

Clear-Echo 822 Ramo 1200-ET (EX-92-EX-MS-DOM)

7H010333 Clear-Echo Astead REGORD-ET ♂

+1.16%F +581NM\$ 2.55SCS +4.9PL
+2.41T +2.16UDC +2.37FLC +2051GTPI™

- ◆ No Shottle, Goldwyn or O MAN in this pedigree
- ◆ Armstead from one of the world's best Ramos daughters
- ◆ Outcross sire specializing in fat test and fitness traits

Sire: Diamond-Oak Armstead-ET

Dam: Clear-Echo 822 Ramo 1200-ET (EX-92-EX-MS-DOM)

1-11 3X 365d 28,790M 4.1% 1,188F 3.2% 924P

MGS: Ramos (GM)

MGD: Clear-Echo Hershi D-Rac 822 (VG-87-DOM)

4-5 3X 365d 40,830M 3.1% 1,273F 2.6% 1,081P

™Super Sampler and gender SELECTed are trademarks of Select Sires Inc.; (PI) is a trademark of Hudson Association USA. 04-10 USGA/AN Genetic Evaluation sublines: FLAX Yield 76, MMS 70, SES 71, PI AS, SCR 70 Type 71, PI Yield 77, MMS 77, PI GJ, Type 73, RECORD Yield 76, MMS 71, SES 71, PI AS. All data on this page qualify for semen export to Canada. Artificial insemination through gender SELECTed™ semen on for single use artificial insemination of heifers only. Not for resale. U.S. Patent Nos. 5,135,759; 7,208,265; 6,872,422. Select Sires



Phone: (614) 873-4683

Fax: (614) 873-5751

www.selectsires.com