

January 2010 genetic evaluation changes

The routine update of the genetic base used as a reference point for genetic evaluations occurred with the January 2010 sire summaries. Additionally, the formulas for Net Merit and TPI™ were also revised at this time. Following are the main changes that occurred with the formulas and what it means to you.

Economic assumptions used in formulating Net Merit, like milk prices, feed prices and replacement heifer prices have been updated. Additionally, more emphasis was placed on Productive Life (PL), daughter pregnancy rate (DPR) and smaller body size. Emphasis on fat and protein yield was reduced. The end result

Understanding the changes in formulas is important and selection standards should be adjusted for your herd to account for the new PTA levels of A.I. sires.

is sires that are moderate to low for PL and DPR will rank lower with the new Net Merit index; while sires that transmit moderate production but excel in PL and DPR will rank higher.

Recognizing the needs and strengths of the Holstein breed, as well as the opportunities provided by genomic evaluations, the Holstein Association

approved a revised TPI™ formula which increases emphasis on PL and DPR and reduces emphasis on production traits and overall confirmation (PTAT). High type bulls that are moderate to low for PL and DPR now rank lower with the new TPI™ than they did on previous listings. High PL and DPR bulls rank higher with this new version of TPI™.

Understanding the changes in formulas is important and selection standards should be adjusted for your herd to account for the new PTA levels of A.I. sires. Talk to your NorthStar Cooperative professional for assistance with selection standards for your herd. ☆

New Graduates



(photo reversed)

7H09030

RICHMAN

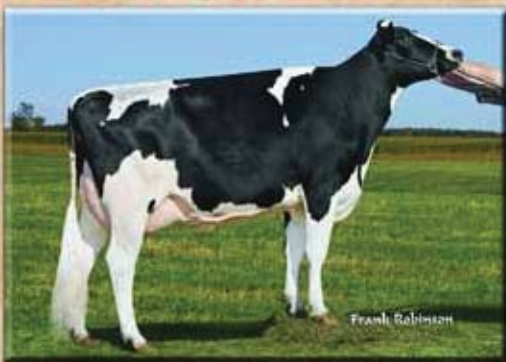
#1 TPI™ Keystone Potter son

+2.93 UDC +1967 GTPI™ +4.1 PL



7H08885

EMPHASIS



Frank Robinson

Only bull in active A.I. over
+3.00 UDC and FLC
+2.51 T +1867 GTPI™ +3.6 PL



NorthStar Cooperative



Antel

DHI

1.800.631.3510

northstarcooperative.com

7H09052

MORPHEOUS



Frank Robinson

End-Road PVF Boliver-ET son with
great type (+2.16) and linear chart
+\$477 NM +1984 GTPI™ +3.2 PL



1/10 USDA & HA % reliabilities. 7H08885 EMPHASIS 89, 85; 7H09052 88, 83; 7H09030 87, 82. TPI™ is a registered trademark of Holstein Association. HealthMark and HerdLife Builder are trademarks of Select Sires.